

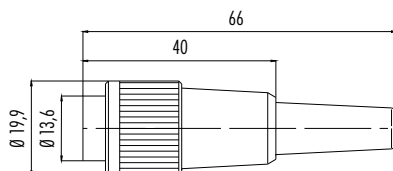
- Bayonet locking system
- 2 – 24 contacts
- Degree of protection IP40
- Solder termination
- Diameter approx. 20 mm
- Touch-proof plastic housing



### Description

Male cable connector

### Drawing



### Contacts

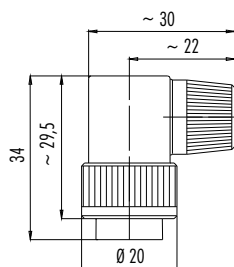
### Cable outlet

### Ordering-No.



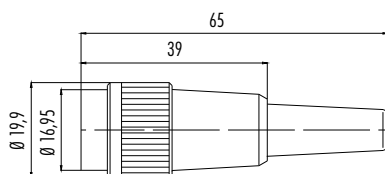
3 DIN		99 0605 00 03
4		99 0609 00 04
5		99 0613 00 05
6 DIN	4–6 mm	99 0617 00 06
7		99 0621 00 07
8 DIN		99 0645 00 08
12		99 0649 00 12

Male angled connector



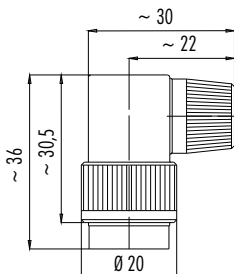
3 DIN		99 0605 70 03
4		99 0609 70 04
5		99 0613 70 05
6 DIN	4–6 mm	99 0617 70 06
7		99 0621 70 07
8 DIN		99 0645 70 08
12		99 0649 70 12

Female cable connector



3 DIN		99 0606 00 03
4		99 0610 00 04
5		99 0614 00 05
6 DIN	4–6 mm	99 0618 00 06
7		99 0622 00 07
8 DIN		99 0646 00 08
12		99 0650 00 12

Female angled connector



3 DIN		99 0606 70 03
4		99 0610 70 04
5		99 0614 70 05
6 DIN	4–6 mm	99 0618 70 06
7		99 0622 70 07
8 DIN		99 0646 70 08
12		99 0650 70 12

### Specifications

Contacts	3 DIN	4	5	6 DIN	7	8 DIN	12	
Wire gauge	max. 0,75 mm <sup>2</sup> (max. AWG 20)						max. 0,25 mm <sup>2</sup> (max. AWG 24)	
Mechanical operation	> 500 Mating cycles							
Temperature range	– 40 °C / + 85 °C							
Rated voltage	250 V (32 V)			125 V (32 V)		60 V (32 V)		
Pollution degree	1 (2) <sup>1)</sup>							
Rated current (40°C)	7 A		6 A			5 A		
Contact plating	Ag (Silver)						Au (Gold)	
Material of housing	PA							

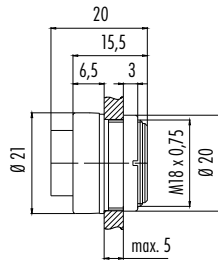
**Description**

**Drawing**

**Contacts**

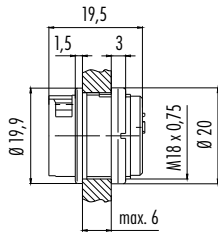
**Ordering-No.**

Male panel mount connector



3 DIN	99 0607 00 03
4	99 0611 00 04
5	99 0615 00 05
6 DIN	99 0619 00 06
7	99 0623 00 07
8 DIN	99 0647 00 08
12	99 0651 00 12

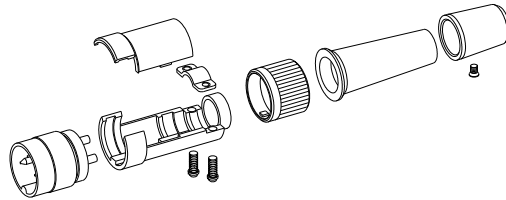
Female panel mount connector



3 DIN	99 0608 00 03
4	99 0612 00 04
5	99 0616 00 05
6 DIN	99 0620 00 06
7	99 0624 00 07
8 DIN	99 0648 00 08
12	99 0652 00 12

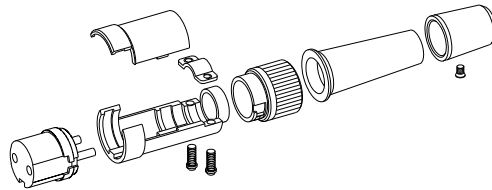
**Component part drawing**

Male cable connector



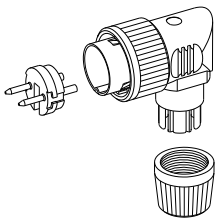
- Male insert
- Carrier sleeve
- Fillister head screw
- Strap
- Cover
- Locking ring
- Cable bushing
- Self-tapping screw
- Sleeve

Female cable connector



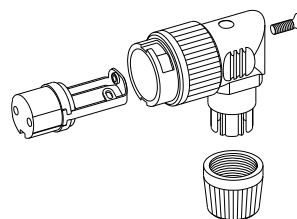
- Female insert
- Carrier sleeve
- Fillister head screw
- Strap
- Cover
- Locking ring
- Cable bushing
- Self-tapping screw
- Sleeve

Male angled connector



- Male insert
- Male angled housing
- Pressing screw
- Cable outlet not adjustable

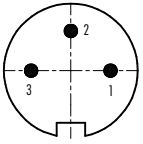
Female angled connector



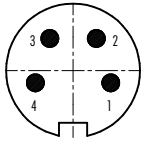
- Female insert
- Holding device
- Female angled housing
- Countersunk screw
- Pressing screw
- Cable outlet not adjustable

## Contact arrangements male insert (mating side)

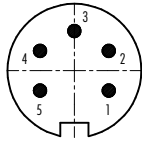
3 DIN contacts



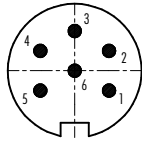
4 contacts



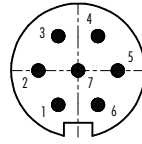
5 contacts



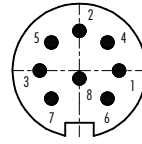
6 DIN contacts



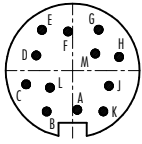
7 contacts



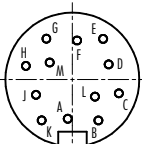
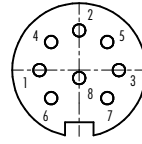
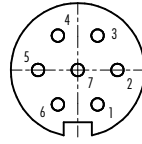
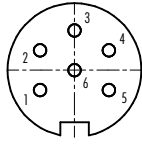
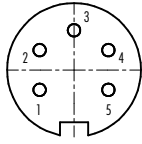
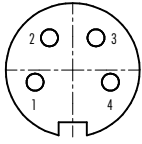
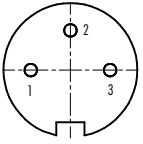
8 DIN contacts



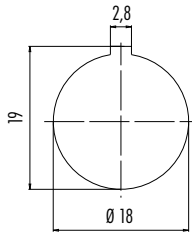
12 contacts



## Contact arrangements female insert (mating side)



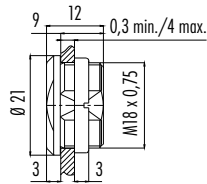
## Panel cut out



## Description

Blind plug

## Drawing



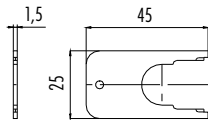
## Ordering-No.

08 2668 000 001



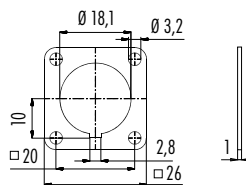
## Mounting spanner for panel mount connectors

07 0010 001



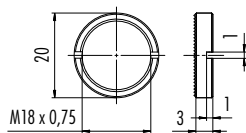
## Rectangular flange for panel mount connectors, IP40

04 0106 001



## Ring nut for fixing thread

01 0010 001 with knurled screw



## Hexagonal nut

## Thickness

2,5 mm

## Ordering-No.

01 0146 001

5 mm

01 5006 001

