

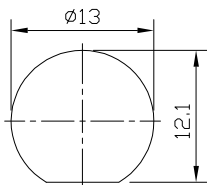
FEATURES

- BNC to IEC169-8
 - Body: Brass, Plated 2.5 micrometres (100µ") bright nickel over copper
 - Inner Contact: Phosphor Bronze, Plated 0.8 micrometres (30µ") gold over nickel
 - Coax Insulator: Teflon
 - Connector Isolated from Mounting
 - RoHS compliant To EU Directive 2011/65/EU
- Ñ Mating Cycles: >500

ELECTRICAL

Impedance:	75
Frequency Range:	0 to 3GHz
Working Voltage:	500V RMS max at sea level
Dielectric Withstand Voltage:	1500V RMS min at sea level
Insulator Resistance:	5G min
Inner Contact Resistance:	3m max
Outer Contact Resistance:	2m max
Return Loss:	> 19dB to 3GHz

MOUNTING



Punch Detail