

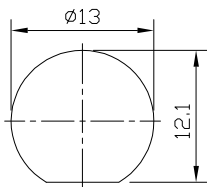
FEATURES

- BNC to IEC169-8
- Body: Brass, Plated nickel
- Inner Contact: Phosphor Bronze, Plated gold over nickel
- Coax Insulator: Teflon
- Connector Isolated from Mounting
- RoHS compliant To EU Directive 2011/65/EU
- Mating Cycles: >500

ELECTRICAL

Impedance:	75
Frequency Range:	0 to 2GHz
Working Voltage:	500V RMS max at sea level
Dielectric Withstand Voltage:	1500V RMS min at sea level
Insulator Resistance:	5G min
Inner Contact Resistance:	3m max
Outer Contact Resistance:	2m max
Return Loss:	>18dB to 2GHz

MOUNTING



Punch Detail