

The E875 Splitter is intended for use in HFC networks. It's extended frequency range and housing has been optimized for broadband applications.

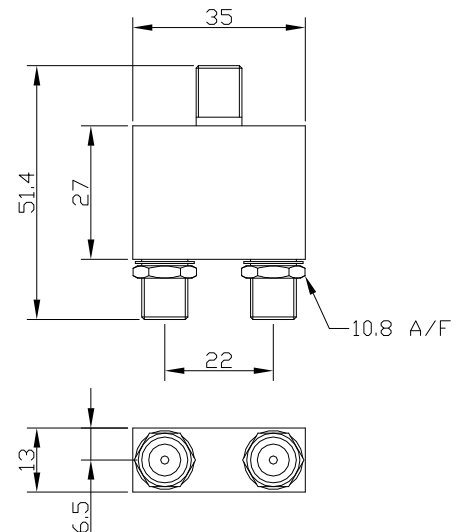
Up to 32 pieces of E875 may be mounted in a single 19"/21" Rack mounting panel while providing easy access. This approach creates a structured environment and occupies the smallest possible space that delivers savings to the Network.

AC&E design and manufacture a broad range of Splitters, Taps and Baluns for housing in rack mounted panels in HFC applications.



ELECTRICAL

Item	Ports	Frequency Range (MHz)	Specification (dB)
Insertion Loss	In-Out	5-400	3.5 Max
		400-500	3.7 Max
		500-600	3.9 Max
		600-1000	4.1 Max
Insertion Loss	Out-Out	5-400	25 Min
		400-500	27 Min
		500-600	25 Min
		600-1000	25 Min
Return Loss	Input	5-400	21 Min
		400-500	20 Min
		500-600	20 Min
		600-1000	20 Min
Return Loss	Output	5-400	21 Min
		400-500	20 Min
		500-600	20 Min
		600-1000	20 Min



MATERIALS

Splitter Housing: Diecast. Nickel Plated
 Splitter Contacts: Phosphor Bronze. Gold Plated
 Nuts & Washers: Brass. Nickel Plated

CONNECTOR

Type: F-Type female

ENVIRONMENTAL

Working Temperature: -30°C to 75°C
 RoHS Compliance: To EU Directive 2011/65/EU

ASSOCIATED ITEMS

Panel 19" 1RU 12x Splitter: E812
 Panel 19" 1RU 16x Splitter: E816
 Panel 19" 1RU 24x Splitter: E824
 Panel 19" 1RU 32x Splitter: E832